



skynesteeI

Threaded Bar





About Skyline Steel

A premier steel foundation supplier serving the US, Canada, Mexico, Central America, Caribbean and South American markets, Skyline Steel is a wholly-owned subsidiary of ArcelorMittal, the world's largest and most respected steel company. ArcelorMittal's backing complements and synergizes Skyline Steel's internal strengths and empowers it to service its customers and the industry.

We have over twenty sales offices across two continents and a robust infrastructure comprised of manufacturing, coating, and fabrication facilities; dozens of stocking locations; an efficiently-coordinated supply chain; and exclusive engineering support. Collectively, these functions support a dynamic sales team that supplies hundreds of thousands of tons of steel foundation products to the industry every year.

Our flagship products include H-piles, pipe piles, hot rolled and cold formed steel sheet piles, threaded bar, micropiles, accessories, structural shapes and connectors. This product portfolio supports a variety of applications, including bridges, buildings, levees, locks and dams, ports, retaining walls, underground parking garages, environmental barrier walls, and wind towers. Of the products we manufacture and supply, 80% are made from recycled steel and are 100% recyclable.

Customer focus, our core philosophy

A strong customer focus has always been a legacy at Skyline Steel. In fact, with us, customer service goes beyond the salesperson-contractor relationship and steel delivery—it continues beyond project completion. Our well-connected network of stockyards throughout North and South America allows our sales team to supply customers with the materials needed to continue working and contractors can feel assured that steel will be available as needed, and on schedule.

Skyline Steel, your true project partner

Skyline Steel's knowledgeable engineering team works with owners, engineers, and contractors long before projects are advertised. To ensure seamless project coordination and completion, engineers propose solutions through all aspects of design, material selection, installation, and construction sequencing. Engineering support is extended even further to include provision of onsite assistance to ensure effective resolution after a project has started. Our relationship with the industry extends beyond sales—we are your *true project partner*.

Skyline Steel's manufacturing capabilities include spiralweld pipe, rolled and welded pipe, cold form sheet piling, and threaded bar in Pennsylvania, Mississippi, Kentucky, Ohio, Illinois, and Washington. To customize and protect these products, we own and operate fabrication and coating facilities in Ohio, Pennsylvania, and Arkansas. Skyline Steel also represents ArcelorMittal and external mills worldwide.

Our parent company: ArcelorMittal

With an annual steel production of over 100 million tons and operations in 60 countries, ArcelorMittal is indisputably the world's largest steel producer. A true leader, ArcelorMittal has led the consolidation of the world steel industry and ranks, today, as the only true *global* steelmaker. The company is an unchallenged leader in all major global markets, including automotive, construction, household appliances, and packaging. ArcelorMittal is also the pioneer in R&D and technology and owns sizeable captive supplies of raw materials in addition to operating extensive distribution networks. Its industrial presence in Europe, Asia, Africa, and the Americas gives ArcelorMittal access to all key steel markets—emerging to mature.

Threaded Bar



As a part of our cutting-edge process, threads are cold formed into hot rolled bars to make finished bars. To preserve the grain structure of the steel, the focus is on forming the threads rather than cutting the thread form. We offer various thread configurations and bar designations ranging from #6 to #28, in both left- and right-hand thread configurations for Grade 75 bars. Grade 150 bars are available in diameters of one to three inches with left-handed threads. All nuts, couplers, and turnbuckles have been carefully designed to develop the full capacity of the bars.

The fully-threaded bar can be cut and coupled in the field at any point to allow for job site flexibility. The bars are suitable for many applications which work well with other Skyline Steel products. Tie-rods and soil anchors can be utilized in conjunction with sheet pile and other retaining walls. Threaded bar cages are used with casing to make high capacity drilled shafts.

Benefits

- Cutting-edge manufacturing process eliminates material loss
- Left- and right-hand thread configurations optimize threading flexibility
- Various grade options offer flexibility in yield strength
- Wide range of sizes
- All threaded bars provide ability to cut bars to desired length
- Ability to supply single bar lengths up to 60 feet
- Wide variety of corrosion protection options available
- Complete range of accessories available to compliment our threaded bars

Applications

- Tie Rods and Tie Backs
- Rock Bolts, Roof Bolts and Anchor Bolts
- Soil Nails
- Micropile Reinforcement
- Threaded Bar Cages
- Tie Backs: Soil and Rock Anchors
- Concrete Reinforcement
- Post-Tensioned Structures

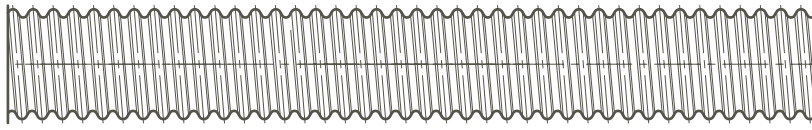
Additional Product Features

- High Tensile Strength
- Fully Threaded Bars
- Yield Stress: 75 and 125 ksi
- Tensile Stress: 100 and 150 ksi
- Offered with cold rolled and hot rolled threads

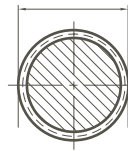
	ASTM A615	ASTM A722
Yield Stress	75 ksi	125 ksi
Tensile Stress	100 ksi	150 ksi
Diameters	¾ in. – 3½ in	1 in. – 3 in.*
Maximum Length	60 ft	60 ft

* Bars over 1 3/8" in diameter are made to the same physical and chemical properties as ASTM A722.

Our threaded bars and accessories can be customized to fit your needs

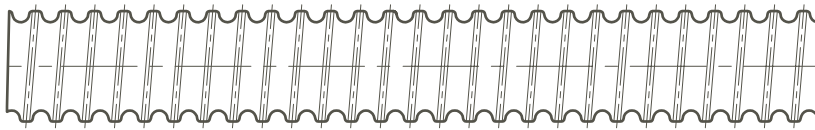


Approx. Major Thread Diameter

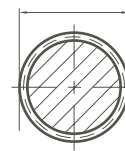


Threaded Bar - Grade 75								
Bar Designation	Nominal Diameter	Minimum Net Area Thru Threads	Minimum Ultimate Strength	Minimum Yield Strength	Nominal Weight	Approx. Major Thread Diameter	Thread Orientation*	Max. Length
	in (mm)	in ² (mm ²)	kips (kN)	kips (kN)	lbs/ft (kg/m)	in (mm)		ft (m)
#6 [†]	3/4 20	0.440 284.0	44 195.7	33 146.8	1.50 2.2	7/8 22.2	Left Hand	60 18.3
#7 [†]	7/8 22	0.600 387.0	60 266.9	45 200.2	2.00 3.0	1 25.4	Left Hand	60 18.3
#8	1 25	0.790 510.0	79 351.4	59.3 263.8	2.70 4.0	1 1/8 28.5	Left Hand	60 18.3
#9	1 1/8 28	1.000 645.0	100 444.8	75 333.6	3.40 5.1	1 1/4 32.0	Left Hand	60 18.3
#10	1 1/4 32	1.270 819.0	127 564.9	95.3 423.9	4.30 6.4	1 3/8 35.0	Left Hand	60 18.3
#11	1 3/8 35	1.560 1006.0	156 694.0	117 520.5	5.30 7.9	1 1/2 38.1	Left Hand	60 18.3
#14	1 3/4 45	2.250 1452.0	225 1000.9	168.7 750.4	7.65 11.4	1 7/8 47.6	Right Hand	60 18.3
#18	2 1/4 55	4.000 2581.0	400 1779.4	300 1334.5	13.60 20.2	2 7/16 62.0	Right Hand	60 18.3
#20	2 1/2 64	4.910 3168.0	491 2184.0	368 1637.0	16.69 24.8	2 3/4 70.0	Right Hand	60 18.3
#24	3 76	7.070 4417.0	707 3142.0	530 2356.0	24.10 35.9	3 1/4 82.6	Right Hand	60 18.3
#28	3 1/2 89	9.610 6200.0	960 4274.0	720 3206.0	32.70 48.7	3 3/4 95.3	Right Hand	60 18.3

#6-#18: ASTM A615. #20-#28: Meet physical properties. *Other thread orientation available upon request. † Call for availability



Approx. Major Thread Diameter

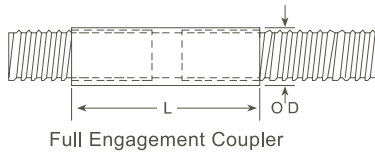


Threaded Bar - Grade 150							
Nominal Diameter	Minimum Net Area Thru Threads	Minimum Ultimate Strength	Minimum Yield Strength	Nominal Weight	Approx. Major Thread Diameter	Thread Orientation*	Max. Length
in (mm)	in ² (mm ²)	kips (kN)	kips (kN)	lbs/ft (kg/m)	in (mm)		ft (m)
1 26	0.850 549	128 567	102 454	3.1 4.6	1 1/8 28.6	Left Hand	60 18.3
1 1/4 32	1.250 807	188 834	150 667	4.5 6.7	1 1/2 38.1	Left Hand	60 18.3
1 3/8 36	1.580 1019	237 1054	190 843	5.7 8.5	1 5/8 41.3	Left Hand	60 18.3
1 3/4 46	2.600 1664	400 1779	320 1423	9.1 13.5	2 50.8	Left Hand	50 15.2
2 1/2 65	5.190 3350	778 3457	622 2766	18.3 27.2	2 3/4 69.9	Left Hand	50 15.2
3 75	7.060 4169	1059 4702	847 3766	24.0 35.7	3 1/4 82.6	Left Hand	50 15.2

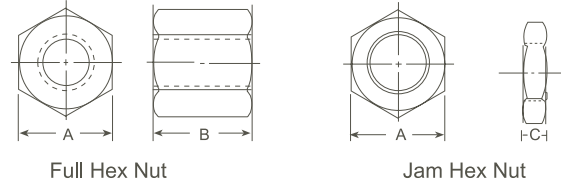
1 inch to 1 3/8 inch: ASTM A-772. 1 3/8 inch to 3 inches: Certified ksi only. *Other thread orientation available upon request.

Threaded Bar Accessories

Threaded Bar Connectors



Hex Nuts (Full and Jam Nuts)



Grade 75 Bar		
Bar Designation	OD in (mm)	L in (mm)
#6	1.250 31.8	3.500 88.9
#7	1.375 34.9	4.000 101.6
#8	1.625 41.3	4.500 114.3
#9	1.875 47.6	5.000 127.0
#10	2.000 50.8	5.500 139.7
#11	2.250 57.2	6.000 152.4
#14	2.875 73.0	7.875 200.0
#18	3.500 88.9	9.125 231.8
#20	4.000 101.6	9.500 241.3
#24	4.750 120.6	10.750 243.0
#28	5.500 139.7	12.000 304.8

Grade 75 Bar			
Bar Designation	A in (mm)	B in (mm)	C in (mm)
#6	1.250 31.8	1.625 41.3	0.375 9.5
#7	1.438 36.5	1.750 44.5	0.438 11.1
#8	1.625 41.3	2.000 50.8	0.500 12.7
#9	1.750 44.5	2.000 50.8	0.563 14.3
#10	2.000 50.8	2.187 55.5	0.625 15.9
#11	2.250 57.2	2.500 63.5	0.688 17.5
#14	2.750 69.9	3.250 82.6	0.938 23.8
#18*	3.500 88.9	3.500 88.9	1.000 25.4
#20*	4.000 101.6	4.000 101.6	1.125 28.6
#24**	4.750 120.6	4.500 114.3	1.500 38.1
#28**	5.500 139.7	6.000 152.4	1.563 39.7

*Round collar nut available **Round collar nut with flats

Grade 150 Bar		
Nominal Diameter in (mm)	OD in (mm)	L in (mm)
1 26	1.750 44.5	4.250 108.0
1 ¼ 32	2.125 54.0	5.250 133.4
1 ⅜ 36	2.375 60.3	5.750 146.1
1 ¾ 46	3.000 76.2	8.500 215.9
2 ½ 65	4.250 108.0	10.000 254.0
3 75	5.000 127.0	12.000 308.0

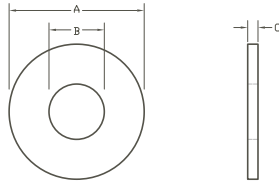
Grade 150 Bar			
Nominal Diameter in (mm)	A in (mm)	B in (mm)	C in (mm)
1 26	1.750 44.5	2.000 50.8	0.500 12.7
1 ¼ 32	2.250 57.2	2.500 63.5	0.625 15.9
1 ⅜ 36	2.500 63.5	2.750 69.9	0.750 19.1
1 ¾ 46	3.000 76.2	3.500 88.9	1.250 31.8
2 ½ 65	4.000 101.6	4.750 120.7	1.000 25.4
3* 75	5.000 127.0	6.125 155.6	2.000 50.8

*Round collar nut with flats with outside diameter of 5" (127mm).

Our broad range of threaded bar accessories were designed to perfectly complement our threaded bars and facilitate easy threading.

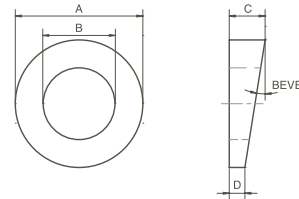
- Full Engagement Coupler
- Hex Nuts (Full and Jam Nuts)
- Hardened Washers
- Round Beveled Washers
- Bearing Plates
- Turnbuckles
- Eyebolts
- Spherical Nuts
- Plastics: Ducts, End Caps, Centralizers

Hardened Washers



Grade 75 Bar			
Bar Designation	A in (mm)	B in (mm)	C in (mm)
#6	1.750 44.5	1.130 28.6	0.150 3.8
#7	2.000 50.8	1.250 31.8	0.150 3.8
#8	2.250 57.2	1.380 34.9	0.150 3.8
#9	2.250 57.2	1.500 38.1	0.150 3.8
#10	2.250 57.2	1.630 41.3	0.150 3.8
#11	3.000 76.2	1.750 44.5	0.220 5.6
#14	3.375 85.7	2.130 54.0	0.280 7.1
#18	4.600 116.8	2.630 66.7	0.280 7.1
#20	5.000 127.0	3.000 76.2	0.280 7.1
#24	5.500 139.7	3.500 88.9	0.280 7.1
#28	6.000 152.4	4.000 101.6	0.313 8.0

Round Beveled Washers



Grade 75 Bar					
Bar Designation	A in (mm)	B in (mm)	C in (mm)	D in (mm)	Bevel degrees
#6	1.75 44.5	0.875 22.2	0.250 6.4	0.125 3.2	15
#7	1.75 44.5	1.125 28.6	0.250 6.4	0.125 3.2	15
#8	1.75 44.5	1.25 31.8	0.270 6.9	0.188 4.8	15
#9	2.625 66.7	1.25 31.8	0.80 20.3	0.34 8.6	15
#10	2.75 44.5	1.63 41.4	1.64 41.7	0.23 5.8	15
#11	3.09 78.4	1.75 44.5	1.64 41.7	0.23 5.8	15
#14	4.00 101.6	2.13 54.1	1.64 41.7	0.23 10.9	15
#18	4.60 116.8	2.63 66.7	1.25 31.8	0.37 9.4	10
#20	5.00 127.0	3.00 76.2	1.75 44.5	0.43 10.9	10
#24	7.50 190.5	3.50 88.9	1.75 44.5	0.43 10.9	10
#28	8.00 203.2	4.00 101.6	2.25 57.2	0.84 21.3	10

Grade 150 Bar			
Nominal Diameter in (mm)	A in (mm)	B in (mm)	C in (mm)
1 26	2.250 57.2	1.250 31.8	0.156 4.0
1 ¼ 32	2.750 69.9	1.500 38.1	0.156 4.0
1 ¾ 36	3.000 76.2	1.625 41.3	0.156 4.0
1 ¾ 46	3.750 95.3	2.130 54.1	0.218 5.5
2 ½ 65	5.000 127.0	2.875 73.0	0.218 5.5
3 75	6.000 152.4	3.375 85.7	0.313 8.0

Grade 150 Bar					
Nominal Diameter in (mm)	A in (mm)	B in (mm)	C in (mm)	D in (mm)	Bevel degrees
1 26	2.625 66.7	1.25 31.8	1.64 41.7	0.23 5.8	15
1 ¼ 32	2.750 69.9	1.63 41.4	1.64 41.7	0.23 9.4	15
1 ¾ 36	3.090 78.5	1.75 44.5	1.64 41.7	0.23 10.9	15
1 ¾ 46	4.000 101.6	2.13 54.1	1.64 41.7	0.23 10.9	15
2 ½ 65	5.000 127.0	3.00 76.2	1.75 44.5	0.43 10.9	10
3 75	8.000 203.2	3.50 88.9	1.75 44.5	0.43 10.9	10

Corrosion Protection



Hot Dip Galvanizing



Double Corrosion Protection (DCP) Tie Rods



Fusion Bonded Epoxy Coating

Corrosion protection is a technique that extends a threaded bar's longevity. There are variations in the level of corrosion protection and the required level of corrosion protection is determined by the aggressiveness of the environment and the design life of the production. Several corrosion protection options are available.

All threaded bars can be supplied with a protective smooth-walled PVC tube. While the standard PVC tube is 0.035 inch thick, other options are available upon request.

The following additional corrosion protection options are available for all threaded bars:

Single Corrosion Protection (SCP)

In a Single Corrosion Protection (SCP) system, the threaded bar is sleeved with a HDPE or PVC pipe sleeve through the free length of the anchor. SCP fabrication is used primarily for temporary applications, but can also be leveraged for non-aggressive, permanent applications.

Double Corrosion Protection (DCP)

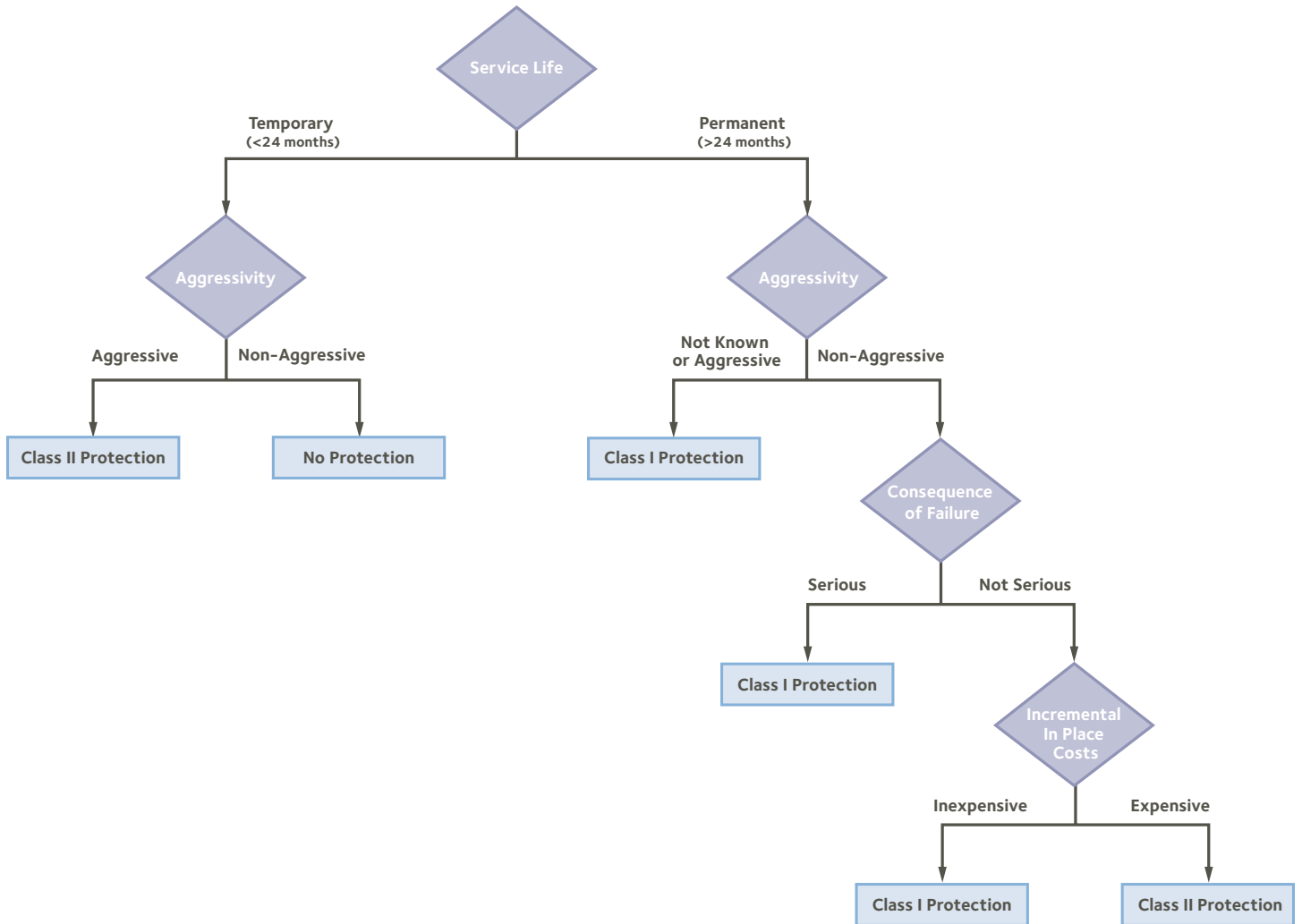
With Double Corrosion Protection, the threaded bar is typically encased in a plastic sleeve filled with grout or other materials to inhibit corrosion. DCP fabrication is used mainly for permanent applications or in uncertain and aggressive environments.

DCP Options

- Encapsulating: Grease or Grout
- Epoxy Coating
- Galvanizing
- Painting
- Plating
- Taping
- Teflon Coating

Oversized accessories are provided to accommodate galvanized and coated bars.

Corrosion Protection Decision Tree



COURTESY OF POST TENSIONING INSTITUTE

Aggressive Environments for Permanent Anchors

- A pH value of less than 4.5
- A resistivity of less than 2,000 Ohm-cm
- Presence of sulfides
- Presence of stray currents
- Indication of chemical attacks to other buried concrete structures

Aggressive Environments for Temporary Applications

- Salt water or tidal marshes
- Cinder, ash, or slag fills
- Organic fills containing humic acid
- Peat bogs
- Acid mine or industrial waste

Class I Protection:

A Class I Protection system encases the prestressing steel inside a plastic encapsulation filled with either grout or a corrosion-inhibiting compound.

Class II Protection:

A Class II Protection system encases the prestressing steel with PVC or HDPE pipe sleeve over the free length and relies on the cement grout to protect the prestressing steel along the bond length.

Tie Rods



Tie rods serve to support a retaining wall that is too tall to be cantilevered. Cantilevered retaining walls rely solely on passive earth pressure in front of the wall for support. To maximize stability, about two-thirds of the cantilevered wall usually has to be embedded into the ground. Support is generally required if there is not enough soil to embed the pile, or if the wall is too tall to make a cantilevered wall feasible.

Tie rods are one of the ways to support the wall. Tie rods are usually made up of threaded bar and connect the main wall to an anchor. The loads from the main retaining wall are transferred to a waler and from there to the tie and finally to an anchor, which may be a secondary wall, an individual pile, or a concrete block. The anchorage system (tie rod, waler, and anchor) allows much taller walls to be built than would otherwise be possible.

Benefits:

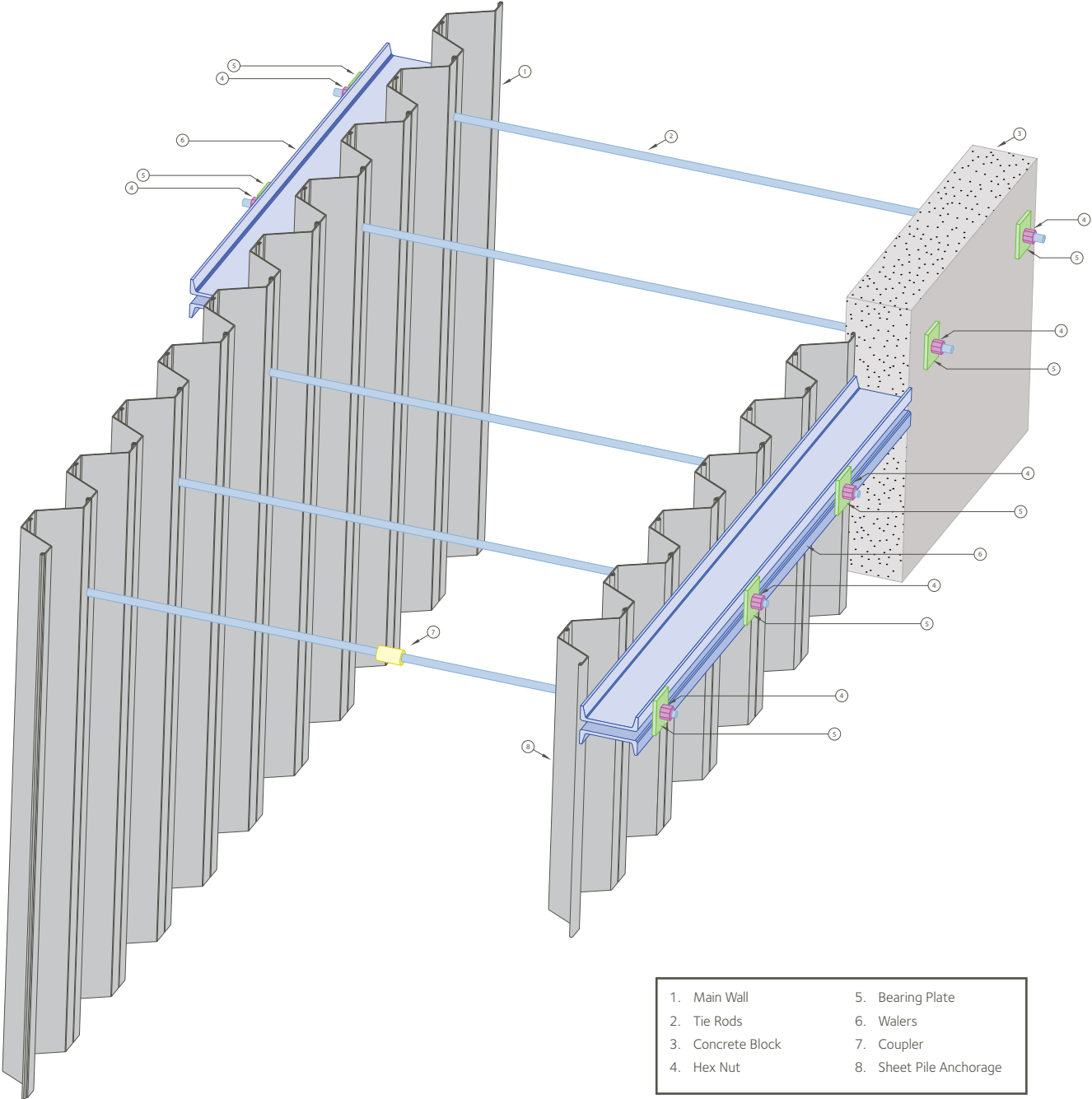
- Continuous threading facilitates bar length modifications to take place at any point along the bar
- Availability of two grades allows for greater flexibility in yield strength
- Several options available for corrosion protection to ensure durability of the bar in various environments
- A wide range of accessories are available to complement the threaded bars
- Oversized accessories to match your requirements
- Availability of various diameters provides greater flexibility in choosing the bar that will best support the required load bearing requirements

Applications

- Marine Bulkheads
- Retaining Walls
- Bridge Abutments and Roadways

Our fasteners have been designed and tested to develop the maximum tensile strength of their corresponding bars.

Sheet Pile Retaining Wall



Rock Bolts, Roof Bolts, Anchor Bolts

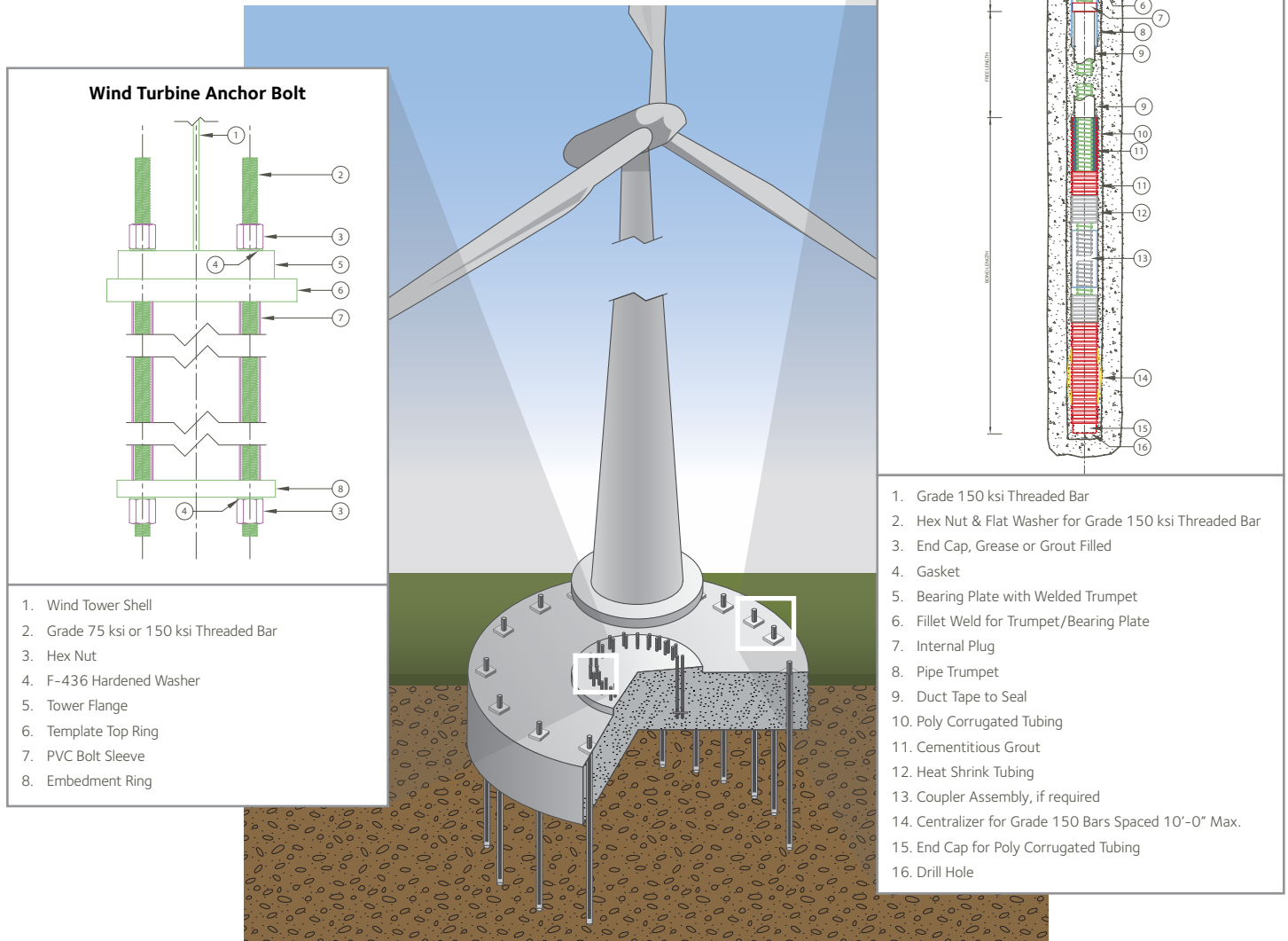
Rock bolts support the vertical face of a rock slope or cut. When securing the face of an excavation, rock bolts are used to vertically support the unstable rock on the surface to the more stable rock behind the excavation. Roof bolts anchor the overhead portion of the tunnel excavation to the more stable rock above it. Anchor bolts serve to secure a structure to its foundation and can be used when securing wind turbines, tower structures, sign posts, stairways, and buildings.

Benefits

- Thread rolling facilitates manufacturing of anchor bolts to strict tolerances
- Grade 75 and Grade 150 threaded bars show minimum relaxation under tension
- Large diameter anchor bolts can be designed to meet loads up to 635,000 lbs with an ultimate force of 1,059,000 lbs. or over 500 tons

Applications

- Wind Turbine Anchor Bolts
- Tunneling and Mining Roof and Rock Bolts
- Utility Tower Anchor Bolts
- Sloped Surface and Rock Face Stabilization



Wind Turbine Anchor Bolt

Tie-Down Anchor

1. Wind Tower Shell
2. Grade 75 ksi or 150 ksi Threaded Bar
3. Hex Nut
4. F-436 Hardened Washer
5. Tower Flange
6. Template Top Ring
7. PVC Bolt Sleeve
8. Embedment Ring

1. Grade 150 ksi Threaded Bar
2. Hex Nut & Flat Washer for Grade 150 ksi Threaded Bar
3. End Cap, Grease or Grout Filled
4. Gasket
5. Bearing Plate with Welded Trumpet
6. Fillet Weld for Trumpet/Bearing Plate
7. Internal Plug
8. Pipe Trumpet
9. Duct Tape to Seal
10. Poly Corrugated Tubing
11. Cementitious Grout
12. Heat Shrink Tubing
13. Coupler Assembly, if required
14. Centralizer for Grade 150 Bars Spaced 10'-0" Max.
15. End Cap for Poly Corrugated Tubing
16. Drill Hole

Soil Nails

A soil nail is a steel bar grouted in a drilled hole that is inclined at an angle. It serves as reinforcement for earth and rock masses and is used to stabilize a steep or vertical wall. Soil nails provide rapid and economical alternatives to traditional construction methods for this type of stabilization and are used in both temporary and permanent applications.

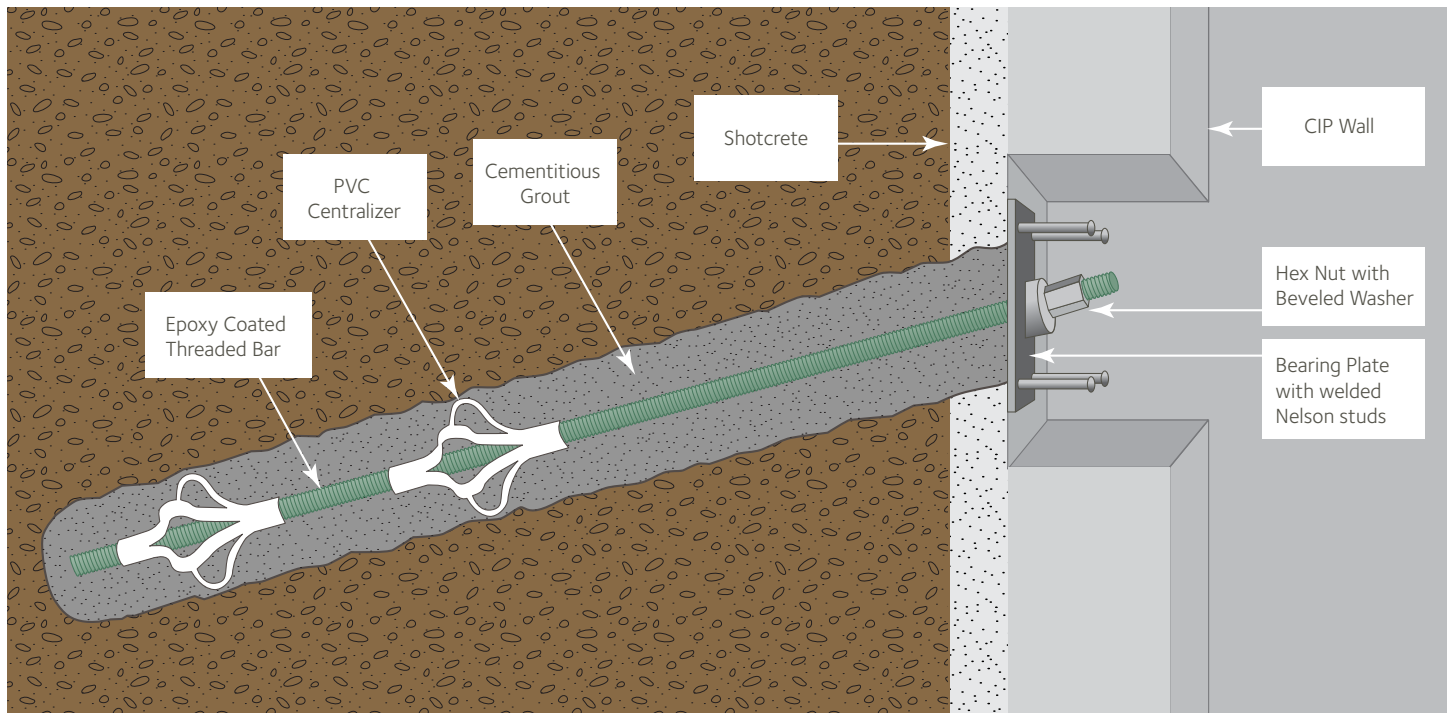
A soil nail retaining wall has a grid of soil nails grouted into the natural soil and capped with a concrete face. The top-down construction method starts with a five- to six-foot vertical cut into the existing soil or rock formation. Next, soil nails are drilled and grouted in a horizontal row. A thin layer of shotcrete is then applied and utilized for temporary support during construction. These steps are repeated until the excavation is complete.

Benefits

- Cutting-edge manufacturing process eliminates material loss
- Left- and right-hand thread configurations optimize threading flexibility
- Various grade options offer flexibility in yield strength
- Wide range of sizes
- All threaded bars provide ability to cut bars to desired length
- Ability to supply single bar lengths up to 60 feet
- Wide variety of corrosion protection options available
- Complete range of accessories available to complement our threaded bars

Applications

- Temporary Support of Excavation
- Permanent Retaining Walls
- Slide Stabilization



Pile Reinforcement

Micropile Reinforcement

Micropiles are small diameter (5" to 13-3/8") drilled and grouted friction or end bearing pipe piles. The pile is made up of short pieces of pipe which are threaded together as the pipe is drilled into the ground. This construction method was specifically developed to allow retrofitting of foundations in areas with restricted headroom, noise and vibration restrictions, and difficult geology. There are many different types of micropiles and several of them use threaded bar reinforcement to increase the structural capacity of the pile.

Benefits

- High capacity threaded bars increase the allowable design loads for the piles
- All threaded bars allow for installation flexibility
- Full capacity splice connections will develop the ultimate strength of the threaded bar to ensure tensile and compression forces are maintained throughout the length of the pile

Applications

- Structural Support of Directly Loaded Pile
- New Foundations
- Underpinning of Existing Structures
- Seismic Retrofitting
- Reinforcement for Slope Stabilization and Settlement Reduction
- Support of Excavation – Soldier Piles
- Permanent Retaining Walls



Threaded Bar Cages

Skyline Steel's threaded bar cages can be delivered to the job fully assembled or in sections which can be coupled in the field.

Benefits

- Reduced field labor costs
- Delivery and assembly flexibility
- Splicing or length extension easily accommodated
- Value engineering can be applied to reflect savings
- Ability to meet state building codes
- Large load bearing capacity

Applications

- High Capacity Drilled or Driven Pile Reinforcement
- Concrete Reinforcement
- Permanent Retaining Wall Reinforcement



Tie Backs: Soil and Rock Anchors

Rock and soil anchors are used to anchor a structure to the ground. The bars are drilled and pressure grouted into soil or rock and are most often used to support retaining walls or to hold down a slab or other structure. Unlike tie rods, anchors do not need a secondary structure for support. The strength is derived from the friction between the grout and the soil.

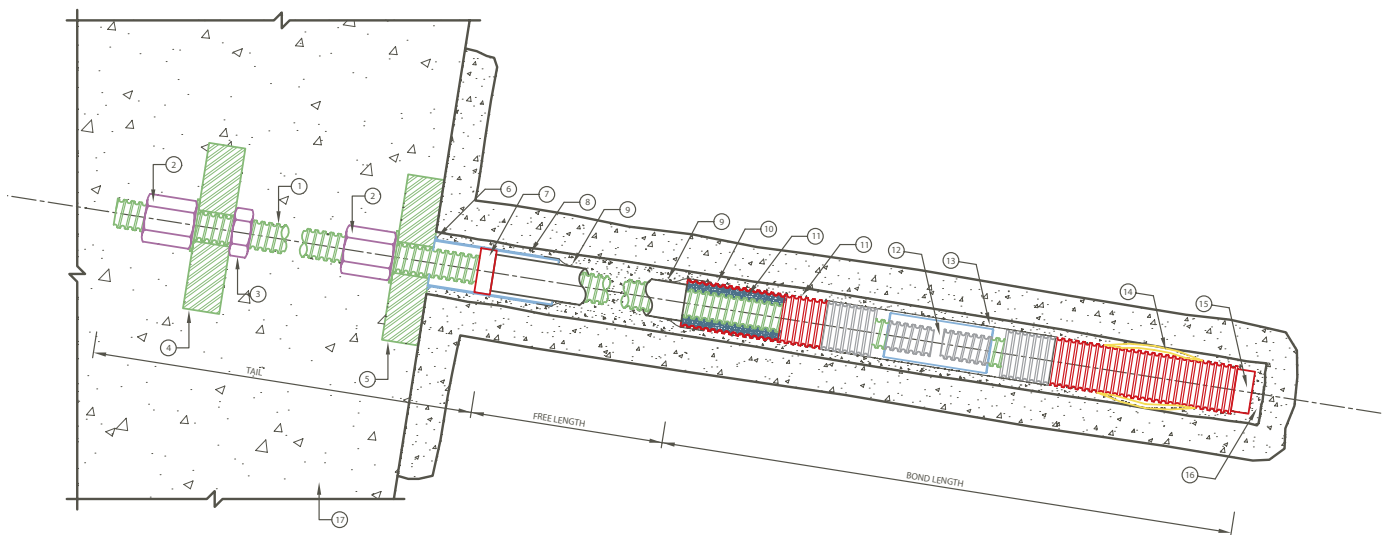
Tiebacks are loaded to 1.33 times the design load after the grout has set, making them one of the most reliable products in the construction industry.

Benefits

- High capacity
- Corrosion resistant
- Easily tensioned
- Full-capacity, spliced connections

Applications

- **Retaining Walls:** Tie backs are used as either a permanent or temporary anchor system for permanent retaining walls or support of excavation applications.
- **Resist Uplift:** Used to resist hydrostatic uplift pressures on a slab, structural force, or wind loads on a structure.
- Sloped Surface Stabilization
- Landslide Mitigation
- Foundation Stabilization



1. Grade 150 ksi Threaded Bar
2. Hex Nut and Flat Washer for Grade 150 ksi Threaded Bar
3. Hex Jam Nut for Grade 150 ksi Threaded Bar
4. Bearing Plate
5. Bearing Plate with Welded Trumpet
6. Fillet Weld for Trumpet/Bearing Plate
7. Internal Plug
8. Welded Pipe Trumpet
9. Duct Tape to seal
10. Poly Corrugated Tubing
11. Cementitious Grout
12. Coupler Assembly, if required
13. Heat Shrink Tubing
14. Centralizer for Grade 150 Bars spaced 10'-0" Max.
15. End Cap for Poly Corrugated Tubing
16. Drill Hole
17. Cast in place Retaining Wall

Find the district sales office that's most convenient for you:

North America

United States

Birmingham, AL
205-262-9909

Denver, CO
303-629-9253

Duluth, GA
770-242-9007

Earth City, MO
314-739-1303

Exeter, RI
401-667-5970

Fife, WA
253-922-2727

Houston, TX
281-992-4000

Mandeville, LA
985-624-3620

Middletown, NJ
732-671-5900

Orlando, FL
407-622-6001

Pittsburgh, PA
412-437-1100

Sacramento, CA
916-463-0105

Springfield, VA
703-978-2500

Taunton, MA
508-821-4700

Tinley Park, IL
708-444-0999

West Chester, OH
513-777-7039

Specialty Pipe Sales

Cartersville, GA
866-736-PIPE (7473)

Canada
St. Albert, AB
780-460-8363

St. Bruno, QC
450-461-6366

Port Moody, BC
604-461-6367

México
Querétaro, México
+52-442-218-5511

Caribbean
Winter Park, FL
407-622-6001

Central America
Querétaro, México
+52-442-218-5511

Cuidad de Panamá, Panamá
507-392-4800

South America

Argentina

Buenos Aires, Argentina
+54-11-4719-8516

Brazil

Belém, Brazil
+55-91-3665-2052

Belo Horizonte, Brazil
+55-31-3379-6045

Curitiba, Brazil
+55-41-2112-4011

Fortaleza, Brazil
+55-85-3499-7012

Rio de Janeiro, Brazil
+55-21-2797-2928

São Paulo, Brazil
+55-1-623-4022

Colombia
Bogotá, Colombia
+57-1-623-4022

Perú
Lima, Perú
+51-1-421-4364

For technical questions and engineering support, please contact us via our technical hotline at:

1-866-875-9546 or email us at: engineering@skylinesteel.com.

Corporate Headquarters: 8 Woodhollow Road, Parsippany, NJ 07054

Phone: 973-428-6100 Fax: 973-428-7399 Toll-Free: 1-888-450-4330 www.skylinesteel.com info@skylinesteel.com

About Skyline Steel

A premier steel foundation supplier serving the US, Canada, Mexico, Central America, Caribbean and South American markets, Skyline Steel is a wholly-owned subsidiary of ArcelorMittal, the world's largest and most respected steel company. ArcelorMittal's backing complements and synergizes Skyline Steel's internal strengths and empowers it to service its customers and the industry.