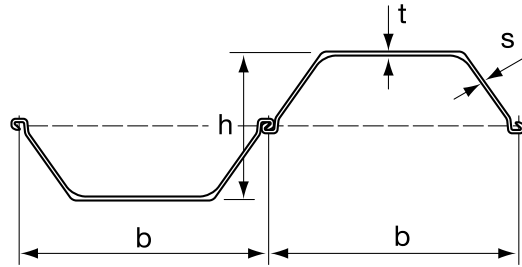


# AU/PU/PU-R/GU

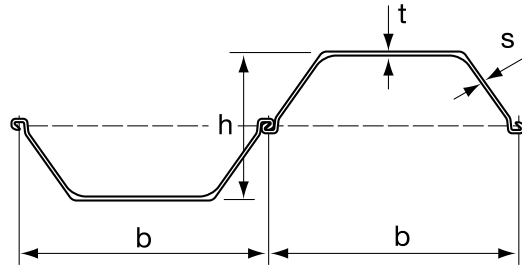
AU/PU/PU-R/GU Steel Sheet Piling



SECTION	Width (b) in (mm)	Height (h) in (mm)	THICKNESS		Cross Sectional Area in <sup>2</sup> /ft (cm <sup>2</sup> /m)	WEIGHT		Section Modulus in <sup>3</sup> /ft (cm <sup>3</sup> /m)	Moment of Inertia in <sup>4</sup> /ft (cm <sup>4</sup> /m)
			Flange (s) in (mm)	Wall (t) in (mm)		Pile lb/ft (kg/m)	Wall lb/ft <sup>2</sup> (kg/m <sup>2</sup> )		
AU 14	29.53 750	16.06 408	0.394 10.0	0.327 8.3	6.23 132	52.35 77.9	21.30 104	26.13 1405	209.36 28680
AU 16	29.53 750	16.18 411	0.453 11.5	0.366 9.3	6.94 147	58.00 86.3	23.55 115	29.76 1600	239.81 32850
AU 17	29.53 750	16.22 412	0.472 12.0	0.382 9.7	7.13 151	59.81 89.0	24.37 119	21.67 1665	250.17 34270
AU 18	29.53 750	17.36 441	0.413 10.5	0.358 9.1	7.09 150	59.47 88.5	24.17 118	33.11 1780	286.89 39300
AU 20	29.53 750	17.48 444	0.472 12.0	0.394 10.0	7.80 165	65.12 96.9	26.42 129	37.20 2000	324.41 44440
AU 21	29.53 750	17.52 445	0.492 12.5	0.406 10.3	7.98 169	67.00 99.7	27.24 133	38.60 2075	337.11 46180
AU 23	29.53 750	17.60 447	0.512 13.0	0.374 9.5	8.17 173	68.61 102.1	27.85 136	42.22 2270	370.11 50700
AU 25	29.53 750	17.72 450	0.570 14.5	0.402 10.2	8.88 188	74.19 110.4	30.11 147	46.50 2500	410.55 56240
AU 26	29.53 750	17.76 451	0.591 15.0	0.413 10.5	9.07 192	76.07 113.2	30.92 151	47.99 2580	424.42 58140
PU 12	23.62 600	14.17 360	0.386 9.8	0.354 9.0	6.61 140	44.42 66.1	22.53 110	22.32 1200	157.68 21600
PU 12 10/10	23.62 600	14.17 360	0.394 10.0	0.394 10.0	6.99 148	46.77 69.6	23.76 116	23.34 1255	164.83 22580
PU 18 <sup>-1</sup>	23.62 600	16.93 430	0.402 10.2	0.331 8.4	7.28 154	48.79 72.6	24.78 121	31.06 1670	262.44 35950
PU 18	23.62 600	16.93 430	0.441 11.2	0.354 9.0	7.70 163	51.68 76.9	26.21 128	33.48 1800	282.15 38650
PU 22 <sup>-1</sup>	23.62 600	17.72 450	0.437 11.1	0.354 9.0	8.22 174	55.03 81.9	28.06 137	38.32 2060	338.57 46380
PU 22	23.62 600	17.72 450	0.476 12.1	0.374 9.5	8.65 183	57.86 86.1	29.49 144	40.92 2200	361.06 49460
PU 28 <sup>-1</sup>	23.62 600	17.80 452	0.559 14.2	0.382 9.7	9.78 207	65.45 97.4	33.18 162	49.85 2680	442.23 60580
PU 28	23.62 600	17.87 454	0.598 15.2	0.398 10.1	10.20 216	68.41 101.8	34.82 170	52.82 2840	470.56 64460
PU 32	23.62 600	17.80 452	0.768 19.5	0.433 11.0	11.43 242	76.68 114.1	38.91 190	59.52 3200	527.94 72320
PU 8R	23.62 600	11.02 280	0.295 7.5	0.272 6.9	4.87 103	32.73 48.7	16.59 81	14.42 775	79.06 10830
PU 9R	23.62 600	14.17 360	0.276 7.0	0.252 6.4	4.96 105	33.26 49.5	16.79 82	17.48 940	123.59 16930
PU 10R	23.62 600	14.17 360	0.315 8.0	0.276 7.0	5.39 114	36.15 53.8	18.43 90	19.62 1055	138.41 18960
PU 11R	23.62 600	14.17 360	0.354 9.0	0.299 7.6	5.81 123	39.04 58.1	19.87 97	21.67 1165	153.01 20960
PU 13R	26.57 675	15.75 400	0.394 10.0	0.291 7.4	5.86 124	44.08 65.6	19.87 97	23.90 1285	187.54 25690
PU 14R	26.57 675	15.75 400	0.433 11.0	0.315 8.0	6.28 133	47.38 70.5	21.30 104	26.04 1400	204.40 28000
PU 15R	26.57 675	15.75 400	0.472 12.0	0.339 8.6	6.71 142	50.67 75.4	22.94 112	28.18 1515	221.12 30290

# AU/PU/PU-R/GU

AU/PU/PU-R/GU Steel Sheet Piling



SECTION	Width (b) in (mm)	Height (h) in (mm)	THICKNESS		Cross Sectional Area in <sup>2</sup> /ft (cm <sup>2</sup> /m)	WEIGHT		Section Modulus in <sup>3</sup> /ft (cm <sup>3</sup> /m)	Moment of Inertia in <sup>4</sup> /ft (cm <sup>4</sup> /m)
			Flange (s) in (mm)	Wall (t) in (mm)		Pile lb/ft (kg/m)	Wall lb/ft <sup>2</sup> (kg/m <sup>2</sup> )		
PU 8R	23.62 600	11.02 280	0.295 7.5	0.272 6.9	4.87 103	32.73 48.7	16.59 81	14.42 775	79.06 10830
PU 9R	23.62 600	14.17 360	0.276 7.0	0.252 6.4	4.96 105	33.26 49.5	16.79 82	17.48 940	123.59 16930
PU 10R	23.62 600	14.17 360	0.315 8.0	0.276 7.0	5.39 114	36.15 53.8	18.43 90	19.62 1055	138.41 18960
PU 11R	23.62 600	14.17 360	0.354 9.0	0.299 7.6	5.81 123	39.04 58.1	19.87 97	21.67 1165	153.01 20960
PU 13R	26.57 675	15.75 400	0.394 10.0	0.291 7.4	5.86 124	44.08 65.6	19.87 97	23.90 1285	187.54 25690
PU 14R	26.57 675	15.75 400	0.433 11.0	0.315 8.0	6.28 133	47.38 70.5	21.30 104	26.04 1400	204.40 28000
PU 15R	26.57 675	15.75 400	0.472 12.0	0.339 8.6	6.71 142	50.67 75.4	22.94 112	28.18 1515	221.12 30290

GU 6N	23.62 600	12.17 309	0.236 6.0	0.236 6.0	4.20 89	28.16 41.9	14.34 70	11.63 625	70.59 9670
GU 7N	23.62 600	12.20 310	0.252 6.4	0.256 6.5	4.44 94	29.64 44.1	15.16 74	12.56 675	76.29 10450
GU 7S	23.62 600	12.24 311	0.272 6.9	0.283 7.2	4.72 100	31.11 46.3	15.77 77	13.76 740	84.24 11540
GU 8N	23.62 600	12.28 312	0.280 7.1	0.295 7.5	4.87 103	32.59 48.5	16.59 81	14.32 770	87.67 12010
GU 12-500	19.69 500	13.39 340	0.354 9.0	0.335 8.5	6.80 144	38.04 56.6	23.14 113	21.48 1155	143.37 19640
GU 13-500	19.69 500	13.39 340	0.394 10.0	0.354 9.0	7.32 155	40.86 60.8	24.99 122	23.44 1260	156.15 21390
GU 15-500	19.69 500	13.39 340	0.472 12.0	0.394 10.0	8.35 177	46.57 69.3	28.47 139	27.16 1460	181.11 24810
GU 16-400	15.75 400	11.42 290	0.500 12.7	0.370 9.4	9.30 197	41.66 62.0	31.74 155	29.02 1560	164.83 22580
GU 18-400	15.75 400	11.42 292	0.591 15.0	0.382 9.7	10.43 221	46.57 69.3	35.43 173	33.20 1785	190.46 26090

## Available Steel Grades

### American Specifications

ASTM	YIELD STRENGTH	
	(MPa)	(ksi)
S 240 GP	240	35
S 270 GP	270	40
S 320 GP	320	48
S 355 GP	355	51
S 390 GP*	390	58
S 430 GP*	430	62

\*Please contact us for S 390 GP and S 430 GP steel grades.