

Threaded Bar & Accessories



Threaded Bar - Grade 75								
Bar Designation	Nominal Diameter in (mm)	Minimum Net Area Thru Threads in ² (mm ²)	Minimum Ultimate Strength kips (kN)	Minimum Yield Strength kips (kN)	Nominal Weight lbs/ft (kg/m)	Approx. Thread Major Diameter in (mm)	Thread Orientation*	Max. Length ft (m)
#6	¾ 20	0.440 284.0	44 195.7	33 146.8	1.50 2.2	¾ 22.2	Left Hand	60 18.3
#7	7/8 22	0.600 387.0	60 266.9	45 200.2	2.00 3.0	1 25.4	Left Hand	60 18.3
#8	1 25	0.790 510.0	79 351.4	59.3 263.8	2.70 4.0	1 1/8 28.5	Left Hand	60 18.3
#9	1 1/8 28	1.000 645.0	100 444.8	75 333.6	3.40 5.1	1 1/4 32.0	Left Hand	60 18.3
#10	1 1/4 32	1.270 819.0	127 564.9	95.3 423.9	4.30 6.4	1 3/8 35.0	Left Hand	60 18.3
#11	1 3/8 35	1.560 1006.0	156 694.0	117 520.5	5.30 7.9	1 1/2 38.1	Left Hand	60 18.3
#14	1 3/4 45	2.250 1452.0	225 1000.9	168.7 750.4	7.65 11.4	1 7/8 47.6	Right Hand	60 18.3
#18	2 1/4 55	4.000 2581.0	400 1779.4	300 1334.5	13.60 20.2	2 7/16 62.0	Right Hand	60 18.3
#20	2 1/2 64	4.910 3168.0	491 2184.0	368 1637.0	16.69 24.8	2 3/4 70.0	Right Hand	60 18.3
#24	3 76	7.070 4417.0	707 3142.0	530 2356.0	24.10 35.9	3 1/4 82.6	Right Hand	60 18.3
#28	3 1/2 89	9.610 6200.0	960 4274.0	720 3206.0	32.70 48.7	3 3/4 95.3	Right Hand	60 18.3

#6-#18: ASTM A615. #20-#28: Meet physical properties. *Other thread orientation available upon request.

Threaded Bar - Grade 150							
Nominal Diameter in (mm)	Minimum Net Area Thru Threads in ² (mm ²)	Minimum Ultimate Strength kips (kN)	Minimum Yield Strength kips (kN)	Nominal Weight lbs/ft (kg/m)	Approx. Thread Major Diameter in (mm)	Thread Orientation*	Max. Length ft (m)
1 26	0.850 549	128 567	102 454	3.1 4.6	1 1/8 28.6	Left Hand	60 18.3
1 1/4 32	1.250 807	188 834	150 667	4.5 6.7	1 1/2 38.1	Left Hand	60 18.3
1 3/8 36	1.580 1019	237 1054	190 843	5.7 8.5	1 5/8 41.3	Left Hand	60 18.3
1 3/4 46	2.600 1664	400 1779	320 1423	9.1 13.5	2 50.8	Left Hand	50 15.2
2 1/2 65	5.190 3350	778 3457	622 2766	18.3 27.2	2 3/4 69.9	Left Hand	50 15.2
3 75	7.060 4169	1059 4702	847 3766	24.0 35.7	3 1/4 82.6	Left Hand	50 15.2

1 inch to 1 3/8 inch: ASTM A-772. 1 3/8 inch to 3 inches: Certified ksi only. *Other thread orientation available upon request.

Corrosion Protection Options

All threaded bars can be supplied with a protective smooth-walled PVC tube. The standard PVC tube is thin-walled (0.035 inch thick) and is supplied unless otherwise specified. Class 150 and 200 wall thicknesses are also available.

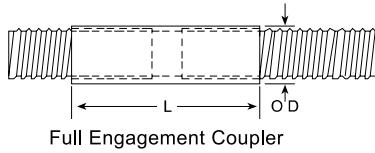
We offer additional corrosion protection options for all threaded bar types including:

- Painting
- Taping
- Epoxy Coating
- Special Dipping
- Plating
- Greasing
- Galvanizing (3 types available)
- Encapsulating
- Teflon Coating
- Others

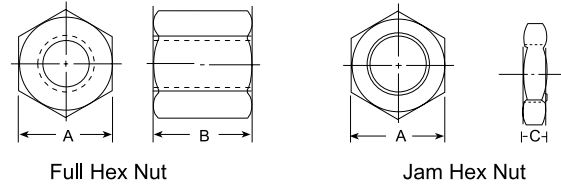
Specify your corrosion requirements. All applicable ASTM or other specification requirements, including your own, can be met.

Threaded Bar & Accessories

Threaded Bar Connectors



Hex Nuts (Full and Jam Nuts)



Grade 75 Bar		
Bar Designation	OD in (mm)	L in (mm)
#6	1.250 31.8	3.500 88.9
#7	1.375 34.9	4.000 101.6
#8	1.625 41.3	4.500 114.3
#9	1.875 47.6	5.000 127.0
#10	2.000 50.8	5.500 139.7
#11	2.250 57.2	6.000 152.4
#14	2.875 73.0	7.875 200.0
#18	3.500 88.9	9.125 231.8
#20	4.000 101.6	9.500 241.3
#24	4.750 120.6	10.750 273.0
#28	5.500 139.7	12.000 304.8

Grade 75 Bar			
Bar Designation	A in (mm)	B in (mm)	C in (mm)
#6	1.250 31.8	1.625 41.3	0.375 9.5
#7	1.438 36.5	1.750 44.5	0.438 11.1
#8	1.625 41.3	2.000 50.8	0.500 12.7
#9	1.750 44.5	2.000 50.8	0.563 14.3
#10	2.000 50.8	2.187 55.5	0.625 15.9
#11	2.250 57.2	2.500 63.5	0.688 17.5
#14	2.750 69.9	3.250 82.6	0.938 23.8
#18*	3.500 88.9	3.500 88.9	1.000 25.4
#20*	4.000 101.6	4.000 101.6	1.125 28.6
#24**	4.750 120.6	4.500 114.3	1.500 38.1
#28**	5.500 139.7	6.000 152.4	1.563 39.7

*Round collar nut available **Round collar nut with flats

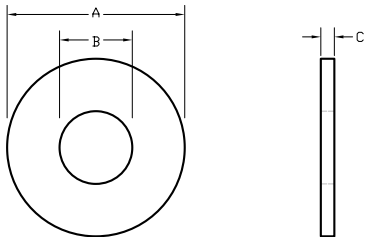
Grade 150 Bar		
Nominal Diameter in (mm)	OD in (mm)	L in (mm)
1 26	1.750 44.5	4.250 108.0
1 ¼ 32	2.125 54.0	5.250 133.4
1 ½ 36	2.375 60.3	5.750 146.1
1 ¾ 46	3.000 76.2	8.500 215.9
2 ½ 65	4.250 108.0	10.000 254.0
3 75	5.000 127.0	12.000 304.8

Grade 150 Bar			
Nominal Diameter in (mm)	A in (mm)	B in (mm)	C in (mm)
1 26	1.750 44.5	2.000 50.8	0.500 12.7
1 ¼ 32	2.250 57.2	2.500 63.5	0.625 15.9
1 ½ 36	2.500 63.5	2.750 69.9	0.750 19.1
1 ¾ 46	3.000 76.2	3.500 88.9	1.250 31.8
2 ½ 65	4.000 101.6	4.750 120.7	1.000 25.4
3* 75	5.000 127.0	6.125 155.6	2.000 50.8

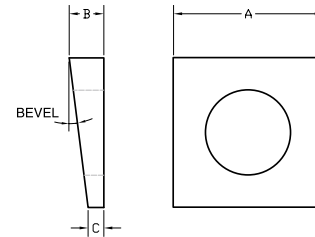
*Round collar nut with flats with outside diameter of 5" (127mm).

Threaded Bar & Accessories

Hardened Washers



Square Beveled Washers



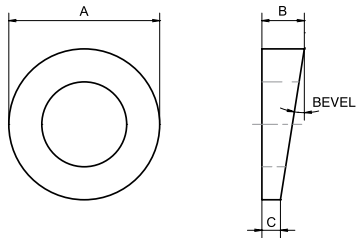
Grade 75 Bar			
Bar Designation	A in (mm)	B in (mm)	C in (mm)
#6	1.750 44.5	1.130 28.6	0.150 3.8
#7	2.000 50.8	1.250 31.8	0.150 3.8
#8	2.250 57.2	1.380 34.9	0.150 3.8
#9	2.250 57.2	1.500 38.1	0.150 3.8
#10	2.250 57.2	1.630 41.3	0.150 3.8
#11	3.000 76.2	1.750 44.5	0.220 5.6
#14	3.375 85.7	2.130 54.0	0.280 7.1
#18	4.600 116.8	2.630 66.7	0.280 7.1
#20	5.000 127.0	3.000 76.2	0.280 7.1
#24	5.500 139.7	3.500 88.9	0.280 7.1
#28	6.000 152.4	4.000 101.6	0.500 12.7

Grade 75 Bar				
Bar Designation	A in (mm)	B in (mm)	C in (mm)	Bevel degrees
#6	2.000 50.8	0.560 14.2	0.250 6.4	9
#7	2.000 50.8	0.560 14.2	0.250 6.4	9
#8	2.250 57.2	0.630 16.0	0.270 6.9	9
#9	2.250 57.2	0.750 19.1	0.390 9.9	9
#10	2.250 57.2	0.750 19.1	0.390 9.9	9
#11	3.000 76.2	0.780 19.8	0.350 8.9	9

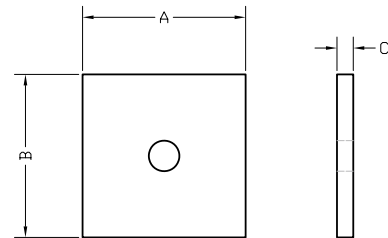
Grade 150 Bar			
Nominal Diameter in (mm)	A in (mm)	B in (mm)	C in (mm)
1 26	2.250 57.2	1.250 31.8	0.156 4.0
1 ¼ 32	2.750 69.9	1.500 38.1	0.156 4.0
1 ⅝ 36	3.000 76.2	1.625 41.3	0.156 4.0
1 ¾ 46	3.750 95.3	2.130 54.1	0.218 5.5
2 ½ 65	5.000 127.0	2.875 73.0	0.218 5.5
3 75	6.000 152.4	3.375 85.7	0.313 8.0

Threaded Bar & Accessories

Round Beveled Washers



Bearing Plates



Bearing plate dimensions reflect typical sizes. Actual design criteria should be used for specific plate sizing.

Grade 75 Bar				
Bar Designation	A in (mm)	B in (mm)	C in (mm)	Bevel degrees
#14	3.500 88.9	0.810 20.6	0.260 6.6	9
#18	5.000 127.0	1.250 31.8	0.370 9.4	10
#20	7.500 190.5	1.750 44.5	0.430 10.9	10
#24	7.500 190.5	1.750 44.5	0.430 10.9	10
#28	8.000 203.2	2.250 57.2	0.840 21.3	10

Grade 75 Bar			
Bar Designation	A in (mm)	B in (mm)	C in (mm)
#6	6 152.4	6 152.4	3/8 9.5
#7	6 152.4	6 152.4	3/8 9.5
#8	8 203.2	8 203.2	3/4 19.1
#9	8 203.2	8 203.2	3/4 19.1
#10	8 203.2	8 203.2	1 25.4
#11	10 254.0	10 254.0	1 25.4
#14	10 254.0	10 254.0	1 1/2 38.1
#18	10 254.0	10 254.0	2 50.8
#20	10 254.0	10 254.0	2 1/2 63.5
#24	10 254.0	10 254.0	2 1/2 63.5
#28	12 304.8	12 304.8	2 3/4 69.9

Grade 150 Bar				
Nominal Diameter in (mm)	A in (mm)	B in (mm)	C in (mm)	Bevel degrees
1 26	2.625 66.7	0.800 20.3	0.340 8.6	10
1 1/4 32	5.250 133.4	1.640 41.6	0.230 5.9	15
1 3/8 36	5.250 133.4	1.640 41.6	0.230 5.9	15
1 3/4 46	5.250 133.4	1.640 41.6	0.230 5.9	15
2 1/2 65	7.500 190.5	2.310 58.7	0.990 25.1	9
3 75	8.000 203.2	2.430 61.7	1.020 25.9	9

Grade 150 Bar			
Nominal Diameter in (mm)	A in (mm)	B in (mm)	C in (mm)
1 26	6 152.4	6 152.4	1 1/4 31.8
1 1/4 32	7 177.8	7 177.8	1 1/2 38.1
1 3/8 36	8 203.2	8 203.2	1 3/4 44.5
1 3/4 46	9 228.6	9 228.6	1 3/4 44.5
2 1/2 65	10 254.0	10 254.0	2 1/2 63.5
3 75	12 304.8	12 304.8	2 3/4 69.9